

DESIGN SPOTLIGHT

# Commercial Fishing Vessels



HOCKEMA GROUP

A full-service consulting and engineering firm delivering exceptional service to clients in the marine industry.

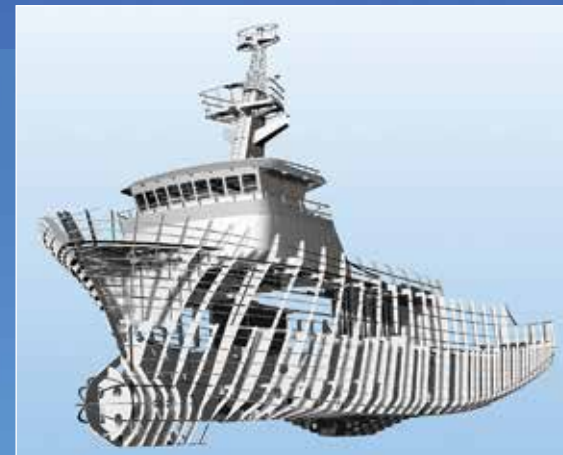


NAVAL ARCHITECTS  
MARINE ENGINEERS  
ELECTRICAL ENGINEERS



HOCKEMA GROUP

**F/V Progress 2019 Conversion**  
*Hull lengthened and widened to 130.6' x 41.5'*  
*RSW Capacity 12,400 cubic feet*



## New Construction

Since our founding in 1997, Hockema Group has developed an extensive fishing vessel portfolio, including numerous new construction projects. Our design library includes a wide range of vessel types: **trawlers, crabbers, seiners, longliners, and gillnetters.**

Starting with one of our professionally engineered base designs, we work with you to develop plans for a vessel tailored to your specific operational needs. Our proven method leads to optimal correlation of vessel operational efficiency, safety, constructability and aesthetics.

We build strong customer relationships during the vessel concept phase, ensuring Hockema designs are derived from your performance goals. This close customer connection strengthens the entire project team's ability to integrate challenging regulatory and safety requirements, collaboratively.

Hockema Group is an industry leader in fishing vessel stability and tonnage measurement. Our designs are engineered for safe operations and to achieve maximum catch capacities throughout the lifetime of the vessel.

## Conversions and Retrofits

Lengthening, sponsoning, repowering, deck gear/gantry replacement, pilot house design... Hockema Group can help you recognize and realize the potential in modernizing existing vessels to extend their life and value.

We keep close track of industry standard fishing methods, as well as each customer's specific vessel functions, so we can provide you with the best design solutions for your vessel and onboard systems.

Similar to new construction, Hockema approaches major vessel conversions and modifications with a detailed assessment of your needs and can offer a range of design concept options for consideration.

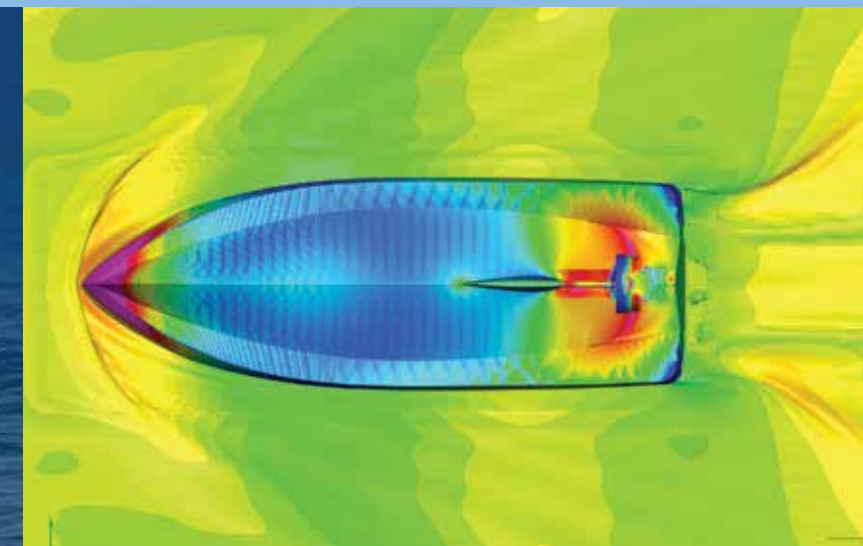
We understand working with existing vessels harbors the risk of discovery once work commences. To mitigate this, Hockema Group places high emphasis on project planning, quantified performance predictions, accurate pre-construction surveys, and review of existing documentation to minimize the impact of any disruptive unknowns during the shipyard period.

NAVAL ARCHITECTURE · FINITE ELEMENT ANALYSIS · HULL FORM OPTIMIZATION · MARINE ENGINEERING · MARINE ELECTRICAL ENGINEERING · 3D MODELING AND LOFTING · PROJECT MANAGEMENT



Whether it is converting a research vessel to a factory trawler, sponsoning a crabber for increased pot count, or repowering a trawler for maximum bollard pull, Hockema Group delivers construction efficient engineering to get your vessel back to service quickly. We can support the complete technical extent of a project from propulsion performance studies to fully lofted installation drawing sets.

We invite you to contact us to find out how we can support you on your next project. We have the ability to scale the resources needed to the size of the job, from simply providing a single point of contact for a variety of smaller tasks to a dedicated project management team executing a large scale design/build.



# HOCKEMA GROUP

NAVAL ARCHITECTS ♦ MARINE ENGINEERS ♦ ELECTRICAL ENGINEERS



Hockema Group is an independent, full service naval architecture firm with experience in both commercial and government projects over a range of marine industry market sectors. We provide naval architecture and marine engineering services for tugs, barges, commercial fishing vessels, dredges, cargo vessels, workboats, passenger vessels and government/military service vessels. Our work is balanced between new construction design, conversion/modification design and consulting support.

Hockema's highest priorities center around safety, efficiency, durability and aesthetics. Our team maintains a keen awareness of the specific needs of both owner and builder. We emphasize safety and efficiency in all aspects of design, construction and operations. Our customer-centered approach fosters innovation, with the end goals for each project firmly in focus.

In our business, competency and respect are paramount. We offer our customers, employees and contractors the best solutions we can create. Rewarding and profitable business is a result of these durable positive relationships.

We also believe that innovative small businesses provide important contributions to the advancement of our industry and society.



## Washington Office

Hockema Group  
5306 Ballard Avenue NW, Suite 204  
Seattle, WA 98107 | 206-365-0919

## Oregon Office

Hockema Group  
61299 Big Eddy Circle  
Bend, OR 97702 | 206-365-0919

[marketing@hockema.com](mailto:marketing@hockema.com)  
[www.hockema.com](http://www.hockema.com)



Scan to add us to  
your contacts



Hockema  
website



Hockema on  
LinkedIn



Hockema on  
Facebook

Front cover: Seeker photo by Mike Lee; Victory photo by Fred Wahl Marine Construction.

